

# Lyon Rural Electric Cooperative

A Touchstone Energy® Cooperative 

Phone : 712-472-2506 or 1-800-658-3976 ~ Website : [www.lyonrec.coop](http://www.lyonrec.coop)  
Office Hours : Monday thru Friday 7:30 a.m. to 4:00 p.m.

Rock Rapids ■ January 2026

## REMINDERS

- If you are moving, please notify the cooperative when you move and inform the new owner to get signed up for service.
- Scholarship applications are due February 16, 2026.

## Lyon Rural Electric Cooperative reaches huge milestone

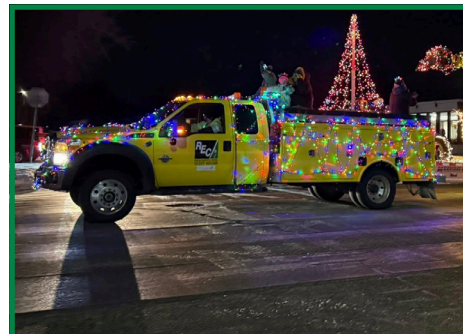


Lyon Rural Electric Cooperative has been investing in long-term reliability of its system by burying overhead lines underground. This upgrade helps protect critical infrastructure from storms, falling trees, and other harsh weather conditions that can frequently disrupt service to our rural areas. By transitioning to underground we aim to reduce outages, lower maintenance costs over time and provide our members with a stronger more dependable electric system. December 12, 2025 marked a huge milestone. The line crew dropped the last of our overhead distribution leaving us with less than 5 miles going to fencers, wells and vacant acreages.

## Start new year with energy-saving, healthy habits

The start of a new year is a perfect time to combine energy-saving habits with family wellness goals. Simple actions like turning off lights in empty rooms and lowering the thermostat at bedtime can become part of a larger resolution to save energy and live more sustainably. For example, families can incorporate movement into energy-conscious routines. Quick exercise sessions that include indoor stretching or dancing can replace extended screen time, keeping kids active while conserving electricity. Cooking meals efficiently, using lids on pots and preparing larger batches reduces appliance use and energy waste.

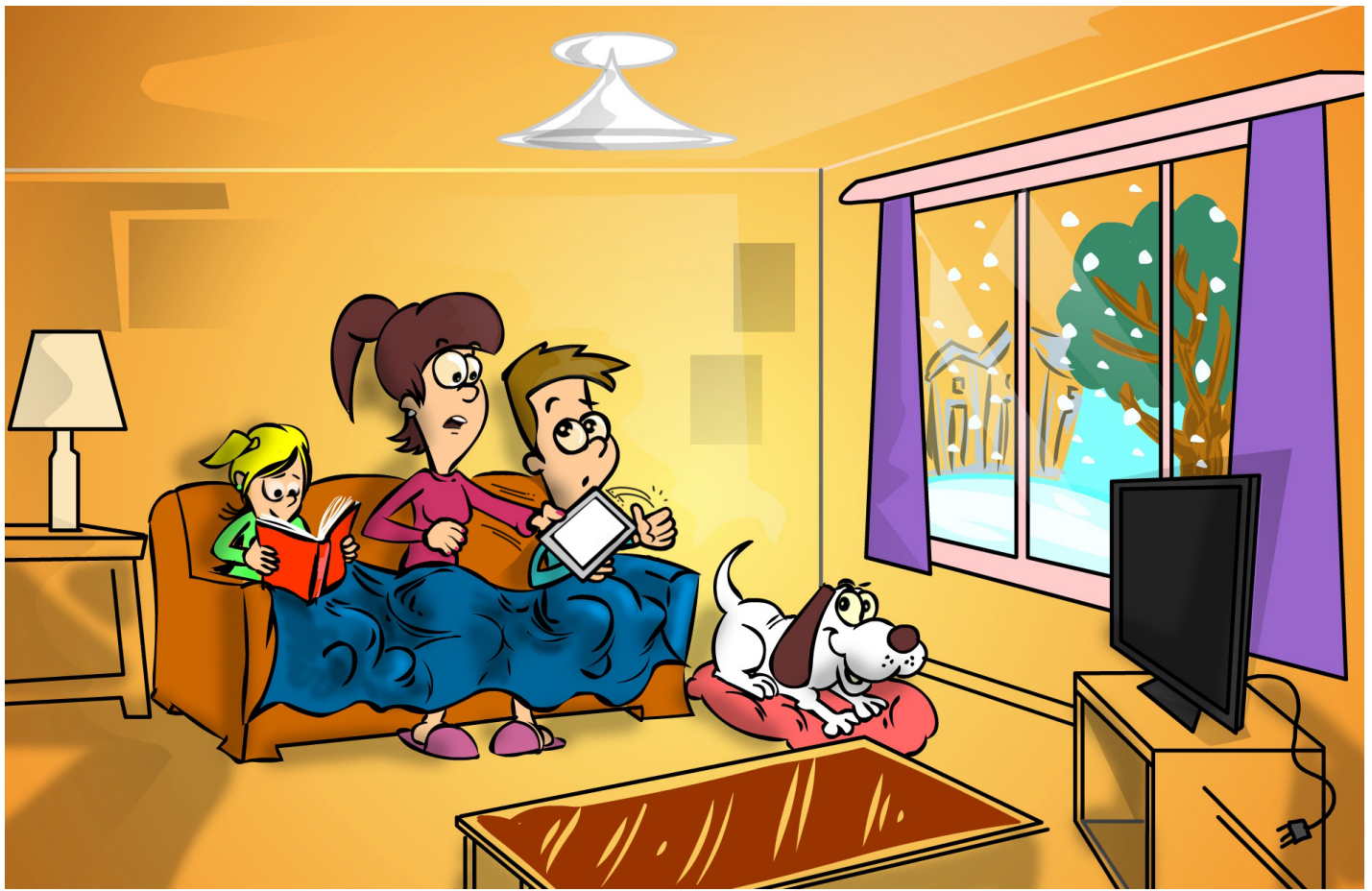
Encouraging children to participate in household energy-saving tasks like turning off lights teaches responsibility and reinforces wellness goals. Celebrating these small achievements makes saving energy a positive family habit rather than a chore. Tracking energy use together, setting monthly goals and rewarding consistent energy-conscious behavior helps children—and their parents—stay motivated. Linking electricity-saving practices to broader health and wellness resolutions ensures that both energy bills and well-being improve throughout the winter.



## Parade of Lights 2025

Lyon Rural Electric won the People's Choice Award for Best Float for the 2nd year in a row at the Rock Rapids Holiday Parade of Lights!! The parade was held December 4.

A shoutout to the crew for their creativity and hours spent decorating and untangling lights. And huge thank you to everyone who voted, cheered and came out to support the parade of lights in the subzero temps.



## LIMIT KIDS' SCREEN TIME ON SNOW DAYS

Snow days can be fun, but they can also cause your family's electricity use to spike. With no school for the day, kids turn to TVs, tablets and gaming consoles to pass the time, which can increase energy bills. Parents can encourage balanced routines that combine screen time with physical activity or quiet indoor play. Simple options like reading, puzzles, craft projects and board games keep children engaged without drawing extra electricity. Setting clear expectations for screen use, such as timed intervals or designated tech breaks, helps children develop energy-conscious habits.

Families can also use this as an opportunity to teach kids about electricity use and its impact on the environment. Planning ahead for snow days—including prepping books, games and indoor activity kits—reduces stress while keeping energy costs under control. Consistent routines benefit both children and parents and create a calmer, more energy-efficient snow day.

## CREATE ENERGY-CONSCIOUS WINTER MORNING ROUTINE

Winter mornings can be hectic, but thoughtful routines help save electricity and set a calm tone for the day. Encourage family members to get dressed in layers before turning on space heaters or hair dryers, reducing the need for extra appliance use. Natural light can replace some overhead lighting. Opening blinds or curtains for morning sunlight both warms rooms slightly and cuts electricity use. Prepare breakfast efficiently by using appliances strategically. Boiling a big pot of water for oatmeal or tea can minimize stovetop use.

Use the microwave instead of the stove or oven whenever possible. Encourage everyone to take shorter showers to save on water heating. Also, setting timers for lights, coffee makers or bathroom heaters ensures electricity is only used when necessary. By combining organization, natural light and careful appliance use, families can create a winter morning routine that saves energy, lowers electricity bills and starts the day in a calm, efficient way.



# NEW ELECTRONICS? UNPLUG THEM

Those big TVs, gaming consoles and sound systems that Santa brought last month can edge your electricity use up, especially if you leave them turned on or plugged in when not in use. Save energy by unplugging devices or using power strips to cut standby power. Encourage children to turn off consoles, TVs, computers and speakers immediately after use. Setting limits on gaming or binge-watching not only reduces electricity use but also promotes healthier screen habits.

Energy-efficient settings on TVs and sound systems can also help. Lowering screen brightness, using energy-saving modes and turning off ambient lighting on electronics reduce power consumption. Consolidating device charging to a single area with a smart power strip that you can turn off ensures your smartphones and tablets are not drawing more energy than they need. Teaching children to enjoy entertainment responsibly while being mindful of electricity use encourages long-term habits that save energy and money. Small, consistent changes can promote more sustainable use of household electronics.




## CHRISTMAS TREE ENTRY AT THE LYON COUNTY NATURE CENTER.

Last month Lyon Rural Electric Cooperative took part in the Christmas tree display at the Lyon County Nature Center. We had a lot of fun decorating a tree. It was great to be part of this event. A big thanks to the group who pitched in with decorating and ideas!

### ENERGY EFFICIENCY

TIP OF THE MONTH

Winter weather can cause your home heating system to work overtime. Check for air leaks and drafts around doors and windows, then seal them with weatherstripping or caulk. Close fireplace dampers when not in use, and consider installing insulating curtains to help keep warm air inside. You can also save energy by lowering your thermostat a few degrees. Even small adjustments like these can reduce heating costs and improve comfort during the coldest months.



Operating Statistics			
NOVEMBER			
	2024	2025	
KWH Purchased	10,282,405	10,577,685	
KWH Sold	9,922,679	10,196,667	
Percentage of Line Loss			
(Year to Date)	2.81%	2.86%	
Total Demand	19,113 KW	18,842 KW	
Average Farm Consumption	2,918 KWH	2,915 KWH	
Average Farm Bill	\$334.30	\$381.26	
Income Per Mile	\$1,153.87	\$1,335.87	
Expenses Per Mile	\$1,164.85	\$1,194.02	
Miles Energized	885.19	872	
Cost of Wholesale			
(For the Month)	6.70¢	6.51¢	

# SCHOLARSHIPS ARE NOW OPEN!

We're excited to announce that applications are now being accepted for next year's cooperative scholarships. The Basin Electric Scholarship will award \$2,500 to one deserving student, while the L&O and Lyon Rural Electric Cooperative Scholarships will each award \$1,500. Deadline for scholarship applications is February 16, 2026.

Students are encouraged to apply early! Stop by our office to pick up an application or it is available online.

## SCHOLARSHIP PROGRAM FOR MEMBER COOPERATIVES

### A program for dependent children of:

- Member-cooperative employees
- Member-cooperative consumers

### How much is the scholarship?

The Basin Electric Scholarship Program will award more than 150 scholarships in 2026.

- The Cooperative Member Employee Dependent Scholarship are \$1,000 each.
- The Cooperative Member Consumer Dependent Scholarship amount has increased to \$2,500. Each member cooperative may choose to award the full amount to one recipient or split it between two recipients. All scholarships must be used for educational expenses, and recipients must enroll in college in the fall semester of the school year for which the scholarship is awarded.

Scholarship checks will be made payable to the student's college, university, or technical school and will be distributed by Basin Electric in August.

### Who is eligible to receive the scholarship?

Dependent children (including adopted or stepchildren) of member-cooperative employees and member-cooperative consumers are eligible to apply.

All applicants must be U.S. citizens and must be enrolled or planning to enroll in a full-time Scholarship Program for Member Cooperatives undergraduate course of study at an accredited, two-year or four-year college, university or vocational/technical school.

Basin Electric scholarships are awarded without regard to other awards, loans, or financial assistance the applicant may have obtained.

### How are the recipients selected?

Scholarship recipients are selected based on their academic achievement, leadership potential, and involvement in school and community activities. Other factors considered include honors received, work experience, a personal statement of educational and career goals, and an outside appraisal.

Scholarships for dependent children of member cooperative employees are administered by Scholarship America.

Each member cooperative is responsible for selecting one recipient in the member cooperative consumer category.

The final recipient's completed application must then be forwarded to Basin Electric by the cooperative.

Scholarship award winners, or the member cooperatives, must notify Basin Electric by July 1 with the name and address of the student's college, university, or technical school. It is also important to report if a student changes schools or decides not to attend.

### What are the recipient's obligations?

Except for the requirements outlined in this brochure, no additional obligations will be imposed upon the scholarship award winner.

Other than payment of the scholarship, no obligations or liability are assumed by Basin Electric, its subsidiaries, or member cooperatives.

### How can I apply?

To apply, complete the required criteria and the scholarship application, which can be obtained from your local electric cooperative office.

Dependent children of member-cooperative employees must submit the application and all necessary information to Scholarship America.

Dependent children of member-cooperative consumers should contact their local cooperative for application instructions and details.

The applications must reach your cooperative by the given deadline. Please check with your local electric cooperative for the deadline date.

### TIPS TO AVOID ENERGY SCAMS ⚠

Beware of "winter bill relief" energy scams. Scammers often exploit high winter bills by offering fake discount or relief programs. They may ask for upfront payments or personal details to lower your rate. Legitimate utilities never demand gift cards, wire transfers or payment through apps like PayPal or Venmo. Always verify offers directly by calling your utility's phone number located on your energy bill—do not call any phone numbers provided in a suspicious email or text. Remember to take time to confirm before you pay; real savings programs won't pressure you for immediate action.



### Nondiscrimination Statement

"This institution is an equal opportunity provider and employer."

To file a program discrimination complaint, a complainant should complete a Form, AD-3027, USDA Program Discrimination Complaint Form, which can be obtained online at <https://www.ocio.usda.gov/document/ad-3027>, from any USDA office, by calling (866) 632-9992, or by writing a letter addressed to USDA containing all the information requested in the form. The completed AD-3027 form or letter must be submitted to USDA by mail to U.S. Department of Agriculture, Office of the Assistant Secretary for Civil Rights, 1400 Independence Avenue, SW, Washington, D.C. 20250-9410; by fax (833) 256-1665 or (202) 690-7442; or by Email: [program.intake@usda.gov](mailto:program.intake@usda.gov)